



MASON INDUSTRIES, Inc.

MERCER RUBBER Co.

350 Rabro Drive, Hauppauge, NY 11788
 Mason- 631/348-0282 • Info@Mason-Ind.com
 Mercer- 631/582-1524 • Info@Mercer-Rubber.com
 FAX 631/348-0279



JOB NAME _____
 CUSTOMER _____
 CUSTOMER P.O. _____
 MASON M. _____
 DWG No. _____

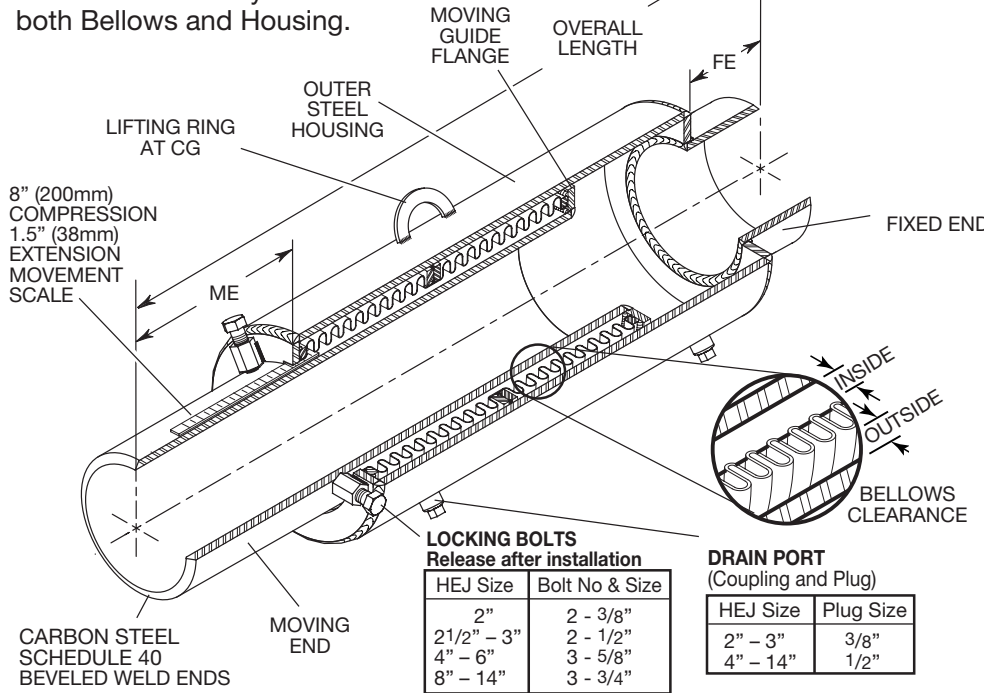
HEJW8

**8" (200mm) Movement
 HOUSED
 EXPANSION
 JOINT with
 WELD ENDS**

Bellows are externally pressurized.
 3.5 Minimum Safety Factor for
 both Bellows and Housing.

PRESSURE REDUCTION TABLE

Temperature (°F) (°C)	Rated Pressure (psi)(kg/cm ²)
200 93	205 14.4
250 121	198 13.9
300 149	191 13.4
400 204	176 12.4
500 260	173 12.2
600 316	171 12.0
700 371	167 11.7
800 427	Not Recommended



2 PLY 304 STAINLESS
 STEEL BELLWS
 Sizes 2 to 3- 4 Sections
 Sizes 4 to 6- 3 Sections
 Sizes 8-14- 2 Sections
 Clearance on both sides
 to eliminate wear

Vacuum Rating is 30 in (762mm) Hg

Drain Plugs are often removed to allow
 attachment of drain hose or steam trap
 for blow down or drainage.

**LOCKING BOLTS
 Release after installation**

HEJ Size	Bolt No & Size
2"	2 - 3/8"
2 1/2" - 3"	2 - 1/2"
4" - 6"	3 - 5/8"
8" - 14"	3 - 3/4"

**DRAIN PORT
 (Coupling and Plug)**

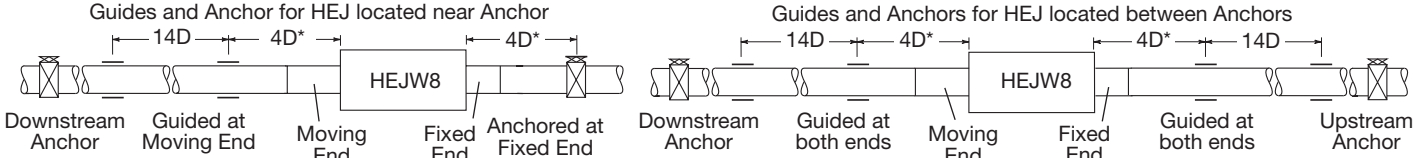
HEJ Size	Plug Size
2" - 3"	3/8"
4" - 14"	1/2"

HEJW8 DIMENSIONS AND PRESSURE RATINGS (American & Metric Units) 8" (200mm) COMPRESSION, 1.5" (38mm) EXTENSION

Type & Size	Pipe Size (in) (mm)	Overall Length (in) (mm)	ME Neutral Length (in) (mm)		FE Length (in) (mm)		Outer Housing O.D. (in) (mm)	Nominal Bellows Clearance (in) (mm)		Spring Rate (lbs/in) (kg/cm)	Thrust ¹ @ 225 psi (15.5 bar) (lbs) (kg)		Rated Pressure @70°F @21°C (psi) (kg/cm ²)	Ship Wt. (lbs) (kg)
			(in) (mm)	(in) (mm)	(in) (mm)	(in) (mm)		Inside (in) (mm)	Outside (in) (mm)		(in) (mm)	(in) (mm)		
HEJW8-2	2 50	40 1016	9 1/2 241	2 1/2 64	11 1/2 288	59 1/16 141	0.39 10	0.39 10	83 15	2500 1134	225 16	86 39		
HEJW8-2 1/2	2 1/2 65	40 1016	9 1/2 241	1 1/2 38	11 1/2 288	59 1/16 141	0.25 6	0.25 6	118 21	2700 1225	225 16	94 43		
HEJW8-3	3 80	40 1016	9 1/2 241	1 1/2 38	11 1/2 288	65 8/16 168	0.32 8	0.33 8	120 22	3900 1769	225 16	114 52		
HEJW8-4	4 100	40 1016	9 1/2 241	1 1/2 38	11 1/2 288	85 8/16 219	0.49 12	0.35 9	150 27	6900 3130	225 16	156 71		
HEJW8-5	5 125	42 1/2 1080	10 254	2 1/2 64	11 1/2 288	95 8/16 244	0.39 10	0.41 10	200 36	9500 4309	225 16	170 77		
HEJW8-6	6 150	42 1/2 1080	10 254	2 1/2 64	11 1/2 288	103 4/16 273	0.39 10	0.39 10	250 45	12600 5715	225 16	275 125		
HEJW8-8	8 200	42 1/2 1080	10 254	2 1/2 64	11 1/2 288	123 4/16 384	0.39 10	0.39 10	300 54	19000 8618	225 16	320 145		
HEJW8-10	10 250	42 1/2 1080	10 254	2 1/2 64	11 1/2 288	16 406	0.53 13	0.53 13	400 72	30000 13608	225 16	430 195		
HEJW8-12	12 300	42 1/2 1080	10 254	2 1/2 64	11 1/2 288	18 457	0.42 11	0.41 10	588 105	40000 18144	225 16	570 259		
HEJW8-14	14 350	45 1/2 1156	10 254	2 1/2 64	11 1/2 288	20 508	0.43 11	0.42 11	700 125	64000 29030	225 16	705 320		

¹Lower Thrust Forces in proportion at lower pressures, i.e. 100 psi Force = 100/225 x published Thrust. Forces on Pipe Anchors must include Thrust Force and Spring Force. Spring Force is determined by multiplying the joint Spring Rate by its Thermal Movement. (in/mm)
 HEJ's installed in piping systems must be anchored on both sides of the joint. HEJ's installed in unanchored piping must have control rods.
 When using HEJW products in copper or brass water or steam systems, dielectric flanges must be used on each end to prevent leakage from galvanic action.

GUIDE SPACING - Referencing Pipe Diameter "D"



*Plus an additional 5" (125mm) for Sizes 2 & 2 1/2

QTY	SIZE	TAG

QTY	SIZE	TAG